

**BRING A TORCH,  
JEANNETTE, ISABELLA**

words

Trad., and Glenn E. Poore

music

*by*

Traditional French carol

arr.: Glenn E. Poore

*Duration 2'13*

ECC17.0288.01E

**European  
Choral  
Club**

a Unisong Music Publishers BV Activity with participation  
of GMC Choral Music and Molenaar Edition BV

P.O. Box 9185  
NL 3301 AD Dordrecht  
The Netherlands

phone: +31 (0)78 622 75 47  
email: [info@europeanchoralclub.com](mailto:info@europeanchoralclub.com)  
internet: [www.europeanchoralclub.com](http://www.europeanchoralclub.com)

# EUROPEAN CHORAL CLUB SERIES



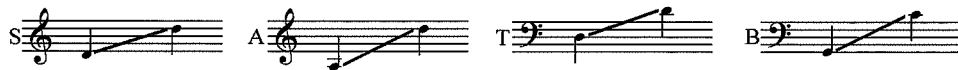
P.O. Box 9185  
NL 3301 AD Dordrecht  
The Netherlands

phone: +31 (0)78 622 75 47  
email: info@europeanchoralclub.com  
internet: www.europeanchoralclub.com

## BRING A TORCH, JEANNETTE, ISABELLA

Words: Traditional & Glenn E. Poore

Music: Traditional French carol  
arr.: Glenn E. Poore



Cheerfully; brightly ( $\text{♩} = \text{ca. } 56$ )

*mf* women unison



27

*mf* Bring a song, Jean - nette, Is - a - bell - a! Bring a song of wor - ship, come!

*mf* Bring a song, a song of wor - ship, come!

*mf* Bring a song, a song of wor - ship come!

*mf* Bring a song of wor - ship come!

35

Hosts of heav - en choirs of an - gels fill the sky with joy - ful prais - es,

Choirs of an - gels fill the sky with joy - ful prais - es,

Hosts of heav'n choirs of an - gels fill the sky with prais - es,

Choirs of an - gels fill the sky with

43

*mf* Glo-ri-a, glo-ri-a in ex - cel - sis De - o! *(mf)* Glo-ri-a, glo-ri-a et in

*mf* Glo-ri-a, glo-ri-a in ex - cel - sis De - o! *(mf)* Glo-ri-a, glo-ri-a et in

*mf* Glo - ri-a, glo - ri - a, *mf* Glo - ri-a, glo - ri - a! *mp*

*mf* Glo - ri - a in ex - cel - sis, *mf* Glo - ri - a,

51

ter - ra pax.

ter - ra pax.

*mf* Bring the shep-herds, Jean - nette, Is - a - bell - a! Bring the shep-herds to

*mf* glo - ri - a!

59

*\* mp* Shep - herds, come, they're long - ing, *mf*

*\* mf* Keep - ing watch o'er their flocks in the night, they're long-ing,

Beth - le - hem, come! Keep - ing watch o'er their flocks in the night, they're long-ing, to *\* mp* *mf*

Keep - ing watch, long -

66

*p* *cresc.* *mf* long-ing to wor - ship Je - sus! A - le - lu - ia, Christ is born,

*p* *cresc.* *mf* long-ing to come and wor-ship! A - le - lu - ia, Christ is born,

*cresc.* *mf* come and wor - ship, wor - ship! A - le - lu - ia, Christ is born,

*cresc.* *mf* ing to wor - ship! A - le - lu - ia, Christ is born,

\* optional solo voices, measure 53 through 78

74 *p* al - le - lu - ia, Christ is born! *mf* Bring your heart, Jean -  
*p* al - le - lu - ia, Christ is born! *mp* Oo—  
*p* al - le - lu - ia Christ is born! *mp* Oo—  
*p* al - le - lu - ia Christ is born! *mp* Oo—

81 *mf* nette, Is - a - bell - a! Bring your heart to the Lord of Love! Gold,  
*mp* Oo— Gold,  
*mp* Oo— Gold,  
*mp* Oo— Gold,

88 *mf* myrrh and frank - in - cense are pre - cious on earth, but hea - ven's gift is  
*mf* myrrh, frank - in - cense, pre - cious, pre - cious, hea - ven's gift is  
*mf* myrrh, frank - in - cense, pre - cious, pre - cious, hea - ven's gift is  
*mf* myrrh, frank - in - cense, pre - cious, pre - cious, hea - ven's gift is

95

Je - sus, born in a low - ly sta - ble, Je - sus,  
 Je - sus, born in a low - ly sta - ble, Je - sus,  
 Je - sus, born in a sta - ble, Je - sus,  
 Je - sus, born in a sta - ble, Je - sus,

102

born un - to us a king! *mp* Bring a torch,  
 born un - to us a king! *mp* Bring a  
 born a king! *mp* Bring a torch,  
 born a king! *mp* Bring a

108

bring a torch!  
 torch, bring a torch!  
 bring a torch!  
 torch, bring a torch!



